



Central Bank of the Islamic Republic of Iran

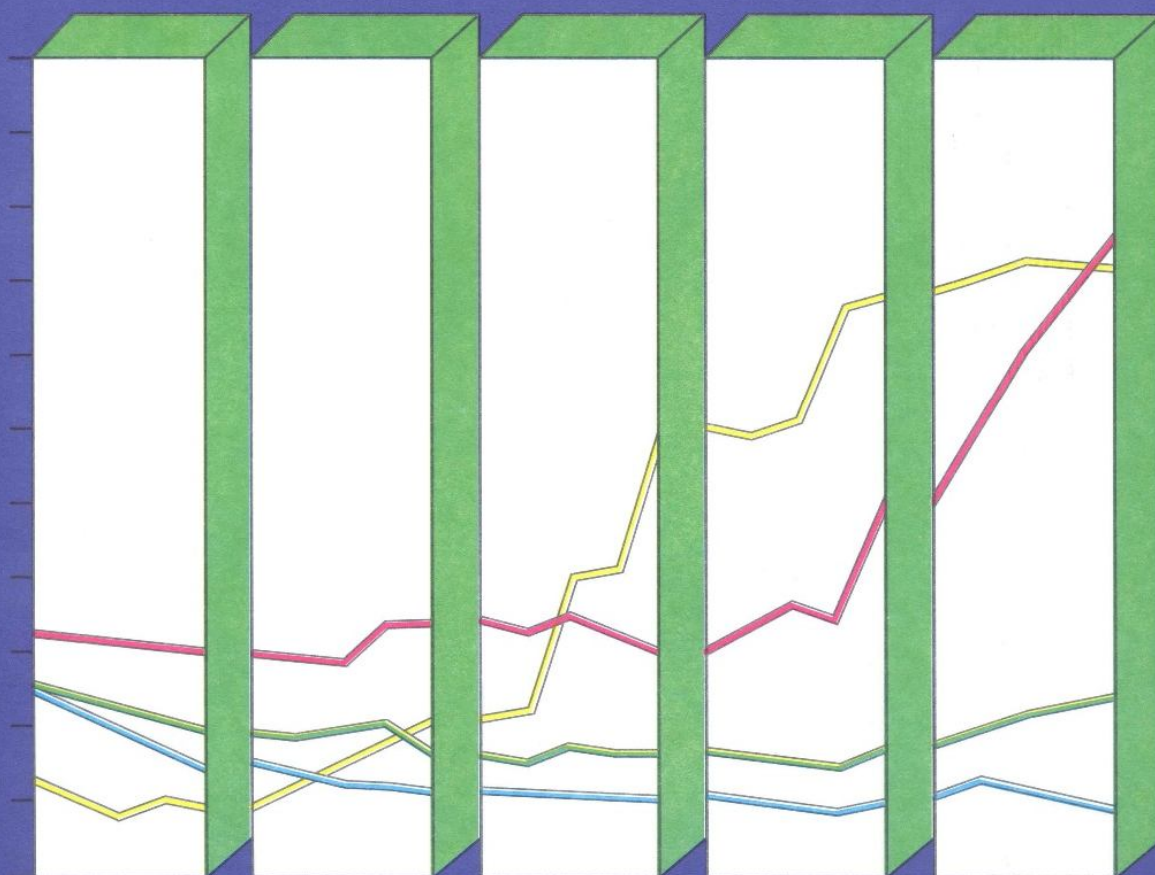
General Directorate of Economic Statistics

## Export Price Index in Iran

Shahrivar 1397

(August 23 -September 22, 2018)

(1390=100)





**Central Bank of the Islamic Republic of Iran**  
**General Directorate of Economic Statistics**

## **Export Price Index in Iran**

**Shahrivar 1397**

**(August 23 -September 22, 2018)**

**(1390=100)**

**IN THE NAME OF GOD**  
**Summary Results of the Export Price Index in Iran**  
**Shahrivar 1397**  
**(1390=100)**

increase



| Groups  | Percent change compared to |  |                                    |  |
|---|----------------------------|--|------------------------------------|--|
|   | previous month             |  | similar month of the previous year |  |
| <b>General Index</b>  | 25.9                       |  | 240.6                              |  |
| <b>Major Groups:</b>  |                            |  |                                    |  |
| 1- Animal Products  | 23.4                       |  | 227.2                              |  |
| 2- Vegetable Products   | 24.1                       |  | 228.7                              |  |
| 3- Animal or Vegetable Fats and Oils                          | 29.0                       |  | 244.3                              |  |
| 4- Prepared Foodstuffs, Beverages and Tobacco                 | 18.1                       |  | 212.9                              |  |
| 5- Mineral Products   | 23.9                       |  | 230.5                              |  |
| 6- Products of the Chemical or Allied Industries              | 33.0                       |  | 313.5                              |  |
| 7-Plastics and Articles Thereof, Rubber and Articles Thereof  | 26.4                       |  | 232.5                              |  |
| 8- Skins and Leather and Articles Thereof                     | 24.8                       |  | 236.6                              |  |
| 9- Wood and Articles of Wood                                  | 20.4                       |  | 217.1                              |  |
| 10- Textiles and Textile Articles                             | 23.3                       |  | 134.8                              |  |
| 11- Footwear  | 24.9                       |  | 212.4                              |  |
| 12- Articles of Stone   | 34.2                       |  | 232.5                              |  |
| 13- Base Metals and Articles of Base Metal                    | 20.2                       |  | 230.4                              |  |
| 14- Machinery and Mechanical Appliances, Electrical Equipment | 24.7                       |  | 225.6                              |  |
| 15- Vehicles and Associated Transport Equipment               | 29.8                       |  | 171.2                              |  |
| <b>Special Group:</b>   |                            |  |                                    |  |
| <b>Petrochemical Products</b>                                 | 30.1                       |  | 271.7                              |  |

## **Export Price Index in Iran**

### **Shahrivar 1397**

**(1390 = 100)**

The Export Price Index (**XPI**) increased 25.9 percent in Shahrivar 1397. The index level of 849.2 was 240.6 percent higher than in Shahrivar 1396.

During the first six months of the current Iranian year, the XPI rose 126.4 percent compared to the similar period in 1396.

The XPI has advanced 77.4 percent over the past twelve months.

In Shahrivar, the animal products group index moved up 23.4 percent, which was mainly due to the increases in the prices for yogurt, frozen fish, and sheep assorted casing.

The vegetable products group index turned up 24.1 percent. The mentioned advance was attributed to the increases in the prices for pistachio, raisin, date, saffron, and liquorice extract powder.

The 29.0 percent increase in the animal or vegetable fats and oils group index was mainly due to the rise in the price for soya oil.

The prepared foodstuffs, beverages and tobacco group index moved up 18.1 percent, largely due to the increases in the prices for biscuit and wafer, cake, ice cream, non-cacao chocolate, potato chips, fruit juice, chocolate, and pasta while the decrease in the price for chewing gum was also considerable.

During the mentioned month, the group index for mineral products went up 23.9 percent. Rises in the prices for propane, butane, industrial oil, copper concentrate, bitumen, cement, paraffin wax, engine oil, barite powder, and bentonite powder were the major reasons for this advance.

The products of the chemical or allied industries group index rose 33.0 percent. Higher prices for methanol, styrene, urea fertilizer, ammonia, mono ethylene glycole, "detergent powders and liquids", glue, molybdenum oxide, shampoo, soap, crystal melamine, spray paint, and building paints were the main factors for the mentioned rise.

The 26.4 percent increase in the plastics and articles thereof, rubber and articles thereof group index was led by advances in the prices for low density polyethylene, high density polyethylene, plastic hoses, motorcycle tire, polyvinyl chloride, polystyrene, and alkyd resin.

During this month, increase in the price for processed sheep skin led to the rise in the group index for skins and leather and articles thereof by 24.8 percent.

In Shahrivar, the group index for wood and articles of wood turned up 20.4 percent. Rise in the price for particle board was the major factor for the mentioned advance.

Mostly as a result of rises in the prices for hand-woven carpet, machine-made carpet, gunny, rug, and tulle, the textiles and textile articles group index moved up 23.3 percent, over this month.

The footwear group index went up 24.9 percent, largely due to the increase in the price for "shoe with uppers of rubber or plastics".

The articles of stone group index advanced 34.2 percent. The rise was driven by increasing prices for "tile and ceramic", float glass, building stones, sanitary porcelain, and sheet glass.

As a result of increasing in the prices for cathode copper, hot coil iron, aluminum ingot, iron beam, zinc ingot, ferromolybdenum, lead ingot, and rebar, the base metals and articles of base metal group index increased 20.2 percent.

Advances in the prices for air cooler, gas water heaters, and sewing machine caused 24.7 percent rise in the machinery and mechanical appliances, electrical equipment group index.

The vehicles and associated transport equipment group index turned up 29.8 percent over this month, mainly due to the increases in the prices for tractor, car radiator, and motorcycle.

Export Price Index in Iran  
(1390=100)

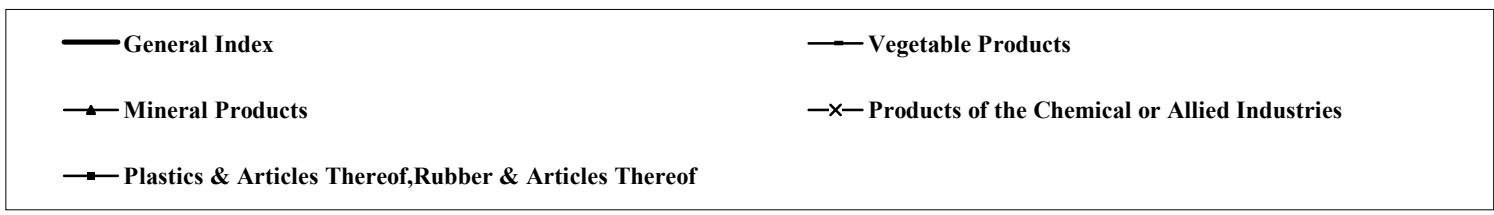
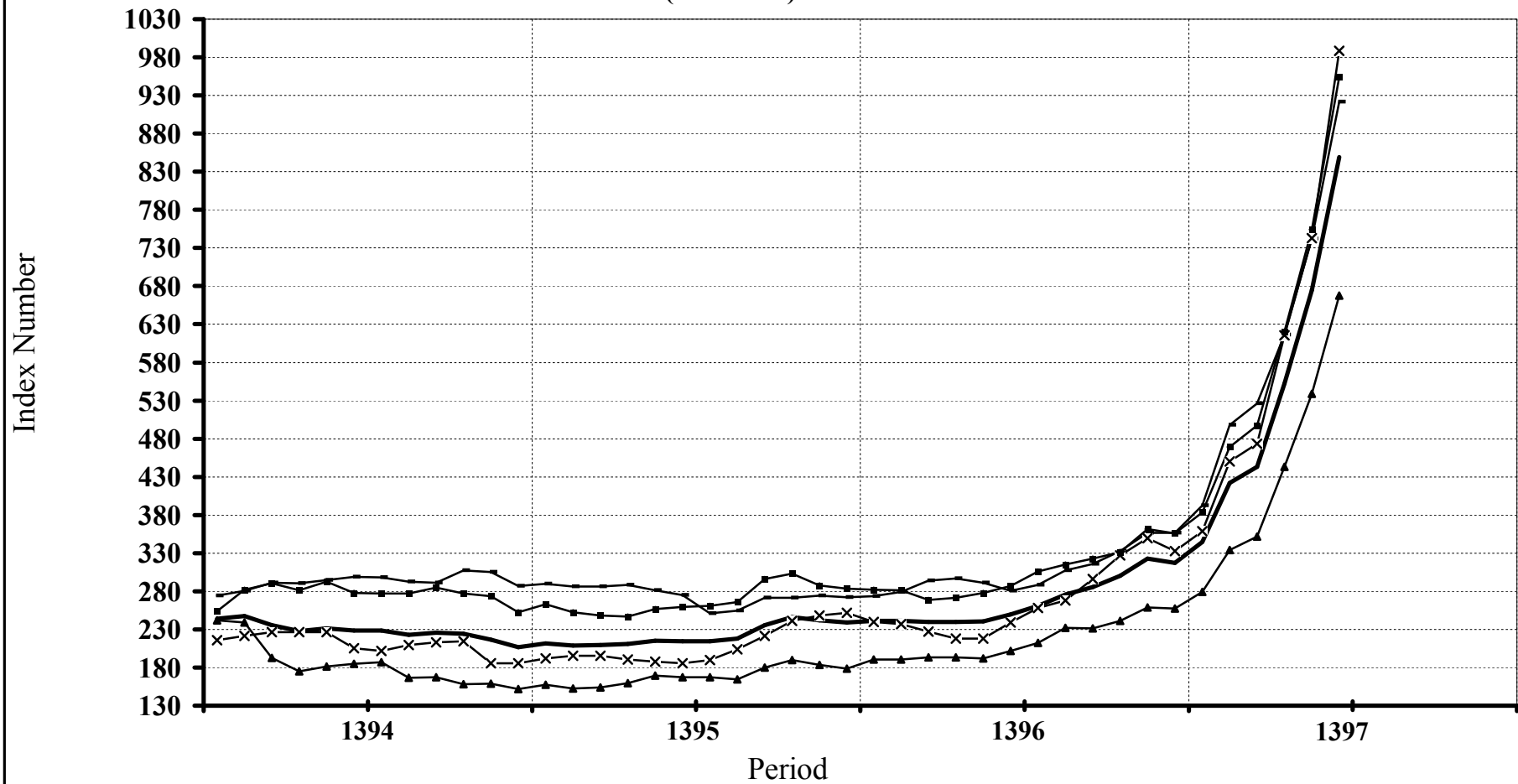


Table 1  
**Export Price Index in Iran**  
Index Numbers and Their Percent Changes  
**Shahrivar 1397**  
(1390 = 100)

| Description   | Base Year Weight | Index Number in Shahrivar 1397 | Percent Change             |                                    |                            |                                    |
|---|------------------|--------------------------------|----------------------------|------------------------------------|----------------------------|------------------------------------|
|   |                  |                                | Shahrivar 1397 Compared to |                                    | Shahrivar 1396 Compared to |                                    |
|   |                  |                                | Previous month             | Similar month of the previous year | Previous month             | Similar month of the previous year |
| <b>General Index</b>  | <b>100.00</b>    | <b>849.2</b>                   | <b>25.9</b>                | <b>240.6</b>                       | <b>3.7</b>                 | <b>16.2</b>                        |
| <b>Major Groups and Selected Sub Groups:</b>                            |                  |                                |                            |                                    |                            |                                    |
| <b>1-Animal Products</b>  | <b>2.41</b>      | <b>1094.5</b>                  | <b>23.4</b>                | <b>227.2</b>                       | <b>1.2</b>                 | <b>6.6</b>                         |
| <b>2-Vegetable Products</b>   | <b>10.43</b>     | <b>921.4</b>                   | <b>24.1</b>                | <b>228.7</b>                       | <b>-3.7</b>                | <b>1.8</b>                         |
| Edible Fruit and Nuts   | 6.90             | 1078.4                         | 24.0                       | 251.0                              | -5.0                       | 4.7                                |
| Coffee, Tea and Spices  | 1.31             | 647.1                          | 13.4                       | 102.2                              | 2.0                        | -14.1                              |
| Lac, Gums, Resins   | 0.18             | 1069.7                         | 12.9                       | 194.9                              | 0.6                        | 14.7                               |
| <b>3-Animal or Vegetable Fats &amp; Oils</b>                            | <b>0.36</b>      | <b>1169.8</b>                  | <b>29.0</b>                | <b>244.3</b>                       | <b>-1.9</b>                | <b>3.1</b>                         |
| <b>4-Prepared Foodstuffs, Beverages &amp; Tobacco</b>                   | <b>3.72</b>      | <b>1071.2</b>                  | <b>18.1</b>                | <b>212.9</b>                       | <b>2.0</b>                 | <b>5.5</b>                         |
| <b>5-Mineral Products</b>   | <b>31.80</b>     | <b>667.7</b>                   | <b>23.9</b>                | <b>230.5</b>                       | <b>5.2</b>                 | <b>20.8</b>                        |
| Mineral Materials   | 2.85             | 862.6                          | 8.8                        | 217.7                              | 5.8                        | 5.3                                |
| Metals Stone  | 3.15             | 667.4                          | 21.3                       | 184.8                              | 5.0                        | 51.8                               |
| Mineral Fuels & Related Oils  | 25.80            | 646.0                          | 26.8                       | 238.2                              | 5.1                        | 20.5                               |
| <b>6-Products of the Chemical or Allied Industries</b>                  | <b>20.11</b>     | <b>988.6</b>                   | <b>33.0</b>                | <b>313.5</b>                       | <b>9.8</b>                 | <b>28.9</b>                        |
| Inorganic Chemicals   | 2.70             | 844.9                          | 33.6                       | 282.5                              | 5.2                        | 5.9                                |
| Organic Chemicals   | 12.69            | 1109.9                         | 34.0                       | 333.2                              | 13.9                       | 46.8                               |
| Fertilisers   | 3.58             | 750.2                          | 32.8                       | 291.3                              | 2.0                        | 8.1                                |
| Tanning or Dyeing Extracts  | 0.38             | 585.5                          | 9.8                        | 161.3                              | 2.0                        | 9.4                                |
| Soap, Organic Surface-Active Agents                                     | 0.56             | 1032.3                         | 22.9                       | 275.8                              | 2.0                        | -4.0                               |
| <b>7-Plastics &amp; Articles Thereof, Rubber &amp; Articles Thereof</b> | <b>10.51</b>     | <b>953.8</b>                   | <b>26.4</b>                | <b>232.5</b>                       | <b>3.3</b>                 | <b>10.6</b>                        |
| Plastics & Articles Thereof   | 10.28            | 958.7                          | 26.1                       | 231.7                              | 3.3                        | 10.6                               |
| <b>8-Skins &amp; Leather &amp; Articles Thereof</b>                     | <b>0.59</b>      | <b>391.1</b>                   | <b>24.8</b>                | <b>236.6</b>                       | <b>2.0</b>                 | <b>-9.4</b>                        |
| <b>9-Wood &amp; Articles of Wood</b>                                    | <b>0.05</b>      | <b>853.3</b>                   | <b>20.4</b>                | <b>217.1</b>                       | <b>-3.5</b>                | <b>-1.8</b>                        |
| <b>10-Textiles &amp; Textile Articles</b>                               | <b>3.61</b>      | <b>709.1</b>                   | <b>23.3</b>                | <b>134.8</b>                       | <b>2.0</b>                 | <b>16.4</b>                        |
| Carpets & Other Textile Floor Coverings                                 | 2.78             | 695.5                          | 22.9                       | 124.2                              | 2.0                        | 19.5                               |
| <b>11-Footwear</b>  | <b>0.46</b>      | <b>1398.1</b>                  | <b>24.9</b>                | <b>212.4</b>                       | <b>2.7</b>                 | <b>16.1</b>                        |
| <b>12-Articles of Stone</b>   | <b>2.13</b>      | <b>849.0</b>                   | <b>34.2</b>                | <b>232.5</b>                       | <b>2.0</b>                 | <b>10.1</b>                        |
| <b>13-Base Metals &amp; Articles of Base Metal</b>                      | <b>9.71</b>      | <b>832.9</b>                   | <b>20.2</b>                | <b>230.4</b>                       | <b>2.2</b>                 | <b>25.9</b>                        |
| Iron and Steel  | 3.01             | 874.8                          | 23.8                       | 317.6                              | -3.6                       | 21.5                               |
| Copper  | 2.37             | 776.7                          | 22.2                       | 188.3                              | 6.8                        | 42.5                               |
| Aluminium   | 1.50             | 797.7                          | 24.8                       | 221.8                              | 9.6                        | 10.1                               |
| <b>14-Machinery &amp; Mechanical Appliances, Electrical Equipment</b>   | <b>2.96</b>      | <b>878.2</b>                   | <b>24.7</b>                | <b>225.6</b>                       | <b>2.1</b>                 | <b>10.2</b>                        |
| <b>15-Vehicles &amp; Associated Transport Equipment</b>                 | <b>1.15</b>      | <b>826.6</b>                   | <b>29.8</b>                | <b>171.2</b>                       | <b>2.6</b>                 | <b>13.4</b>                        |
| <b>Special Group:</b>   |                  |                                |                            |                                    |                            |                                    |
| <b>Petrochemical Products</b>   | <b>46.33</b>     | <b>842.6</b>                   | <b>30.1</b>                | <b>271.7</b>                       | <b>7.3</b>                 | <b>21.1</b>                        |



## General and Major Groups Index Numbers

( 1390 = 100 )

| Description<br>Period | General Index | Animal Products | Vegetable Products | Animal or Vegetable Fats & Oils | Prepared Foodstuffs, Beverages & Tobacco | Mineral Products | Products of the Chemical or Allied Industries | Plastics & Articles Thereof, Rubber & Articles Thereof | Skins & Leather & Articles Thereof |
|-----------------------|---------------|-----------------|--------------------|---------------------------------|--|------------------|---|--|------------------------------------|
| 1376                  | 12.1          | 10.8            | 14.8               | 13.1                            | 14.3                                     | 4.2              | 12.6  | 19.9   | 8.9                                |
| 1377                  | 14.8          | 13.6            | 15.4               | 18.1                            | 19.7                                     | 6.9              | 15.8  | 23.8   | 9.4                                |
| 1378                  | 23.6          | 24.2            | 31.0               | 26.9                            | 29.0                                     | 15.8             | 21.3  | 38.7   | 16.3                               |
| 1379                  | 27.8          | 31.3            | 33.3               | 23.8                            | 32.9                                     | 20.8             | 24.7  | 41.2   | 25.1                               |
| 1380                  | 28.1          | 35.3            | 31.9               | 21.7                            | 33.6                                     | 20.6             | 26.8  | 41.4   | 32.9                               |
| 1381                  | 29.7          | 40.8            | 31.4               | 25.5                            | 34.9                                     | 22.2             | 30.7  | 42.4   | 32.6                               |
| 1382                  | 33.2          | 52.5            | 30.7               | 29.1                            | 38.3                                     | 23.8             | 36.2  | 43.2   | 34.9                               |
| 1383                  | 42.6          | 59.8            | 40.0               | 32.1                            | 42.8                                     | 31.1             | 52.2  | 63.8   | 36.9                               |
| 1384                  | 48.1          | 58.5            | 43.2               | 33.5                            | 50.1                                     | 40.8             | 55.1  | 65.7   | 33.3                               |
| 1385                  | 56.2          | 65.8            | 49.7               | 36.4                            | 53.1                                     | 48.5             | 63.2  | 74.0   | 31.7                               |
| 1386                  | 69.3          | 73.6            | 68.3               | 52.6                            | 58.2                                     | 63.8             | 77.0  | 79.1   | 41.3                               |
| 1387                  | 84.6          | 78.5            | 97.9               | 71.9                            | 77.3                                     | 68.1             | 98.3  | 89.5   | 45.3                               |
| 1388                  | 78.9          | 79.5            | 115.2              | 58.8                            | 81.9                                     | 66.1             | 69.1  | 81.4   | 43.7                               |
| 1389                  | 87.6          | 84.8            | 99.5               | 76.6                            | 86.7                                     | 82.6             | 79.8  | 86.5   | 67.1                               |
| 1390                  | 100.0         | 100.0           | 100.0              | 100.0                           | 100.0                                    | 100.0            | 100.0   | 100.0  | 100.0                              |
| 1391                  | 224.1         | 229.0           | 223.6              | 240.4                           | 226.7                                    | 224.8            | 232.0   | 215.5  | 198.0                              |
| 1392                  | 273.0         | 274.2           | 268.4              | 297.1                           | 301.1                                    | 276.9            | 278.5   | 301.5  | 234.5                              |
| 1393                  | 271.7         | 285.5           | 274.1              | 298.5                           | 299.4                                    | 286.2            | 249.9   | 304.0  | 212.5                              |
| 1394                  | 228.3         | 287.4           | 292.5              | 308.4                           | 306.4                                    | 183.7            | 211.1   | 276.6  | 139.4                              |
| 1395                  | 222.2         | 312.4           | 275.1              | 339.1                           | 327.8                                    | 168.7            | 208.6   | 268.6  | 129.8                              |
| 1396                  | 267.9         | 359.2           | 306.1              | 364.3                           | 360.2                                    | 216.2            | 267.5   | 305.1  | 126.2                              |
| <b>1396</b>           |               |                 |                    |                                 |  |                  |   |  |                                    |
| Shahrivar             | 249.3         | 334.5           | 280.3              | 339.8                           | 342.4                                    | 202.0            | 239.1   | 286.9  | 116.2                              |
| Mehr                  | 261.1         | 345.7           | 288.5              | 383.7                           | 350.7                                    | 212.1            | 258.2   | 305.6  | 128.2                              |
| Aban                  | 275.9         | 352.7           | 307.4              | 357.6                           | 373.3                                    | 232.2            | 268.1   | 314.9  | 131.4                              |
| Azar                  | 285.4         | 379.6           | 315.5              | 381.1                           | 382.4                                    | 231.4            | 296.4   | 323.1  | 134.6                              |
| Dey                   | 300.6         | 403.2           | 332.8              | 406.1                           | 387.9                                    | 241.0            | 326.8   | 331.5  | 133.0                              |
| Bahman                | 323.1         | 442.7           | 356.7              | 433.5                           | 411.2                                    | 259.0            | 349.4   | 361.8  | 142.7                              |
| Esfand                | 317.5         | 430.5           | 356.8              | 411.1                           | 406.5                                    | 257.2            | 332.5   | 355.7  | 142.7                              |
| <b>1397</b>           |               |                 |                    |                                 |  |                  |   |  |                                    |
| Farvardin             | 344.3         | 472.6           | 392.8              | 475.6                           | 438.2                                    | 279.3            | 358.6   | 383.2  | 155.9                              |
| Ordibehesht           | 421.8         | 545.2           | 498.2              | 554.7                           | 529.7                                    | 334.4            | 450.0   | 469.2  | 191.9                              |
| Khordad               | 443.2         | 578.4           | 526.1              | 631.1                           | 564.4                                    | 351.4            | 473.4   | 497.6  | 202.5                              |
| Tir                   | 552.2         | 703.4           | 616.0              | 700.9                           | 697.1                                    | 442.8            | 615.7   | 620.2  | 249.5                              |
| Mordad                | 674.4         | 886.9           | 742.5              | 906.6                           | 907.4                                    | 538.9            | 743.2   | 754.4  | 313.4                              |
| Shahrivar             | 849.2         | 1094.5          | 921.4              | 1169.8                          | 1071.2                                   | 667.7            | 988.6   | 953.8  | 391.1                              |

Table 2 (Continued)

| Period      | Description | General Index | Wood & Articles of Wood | Textiles & Textile Articles | Footwear | Articles of Stone | Base Metals & Articles of Base Metal | Machinery & Mechanical Appliances, Electrical Equipment | Vehicles & Associated Transport Equipment |
|-------------|-------------|---------------|-------------------------|-----------------------------|----------|-------------------|--------------------------------------|---|---|
|             |             |               |                         |                             |          |                   |                                      |   |   |
|             | 1376        | 12.1          | 21.8                    | 20.1                        | 14.9     | 26.0              | 10.2                                 | 22.0  | 35.3                                      |
|             | 1377        | 14.8          | 29.7                    | 21.8                        | 18.6     | 38.6              | 12.0                                 | 28.9  | 44.3                                      |
|             | 1378        | 23.6          | 38.8                    | 27.4                        | 30.3     | 65.6              | 20.0                                 | 46.5  | 61.4                                      |
|             | 1379        | 27.8          | 43.4                    | 31.7                        | 32.5     | 65.0              | 22.1                                 | 48.9  | 64.0                                      |
|             | 1380        | 28.1          | 45.2                    | 31.1                        | 29.6     | 60.7              | 21.1                                 | 48.6  | 63.2                                      |
|             | 1381        | 29.7          | 51.8                    | 32.2                        | 33.5     | 61.8              | 22.0                                 | 48.4  | 64.7                                      |
|             | 1382        | 33.2          | 52.6                    | 36.8                        | 38.7     | 63.1              | 28.0                                 | 52.4  | 66.6                                      |
|             | 1383        | 42.6          | 56.9                    | 40.2                        | 43.3     | 67.3              | 47.9                                 | 59.7  | 71.1                                      |
|             | 1384        | 48.1          | 54.9                    | 48.6                        | 43.6     | 68.2              | 50.9                                 | 72.3  | 68.4                                      |
|             | 1385        | 56.2          | 60.1                    | 58.5                        | 46.1     | 72.9              | 62.6                                 | 80.4  | 73.1                                      |
|             | 1386        | 69.3          | 87.3                    | 65.4                        | 49.0     | 77.5              | 75.2                                 | 100.8   | 86.1                                      |
|             | 1387        | 84.6          | 106.8                   | 80.9                        | 54.5     | 86.9              | 94.5                                 | 107.7   | 90.7                                      |
|             | 1388        | 78.9          | 97.8                    | 86.6                        | 56.5     | 90.1              | 61.6                                 | 95.1  | 93.5                                      |
|             | 1389        | 87.6          | 98.6                    | 89.8                        | 73.3     | 92.5              | 87.4                                 | 94.7  | 98.7                                      |
|             | 1390        | 100.0         | 100.0                   | 100.0                       | 100.0    | 100.0             | 100.0                                | 100.0   | 100.0                                     |
|             | 1391        | 224.1         | 223.5                   | 214.4                       | 206.6    | 238.9             | 215.1                                | 229.9   | 207.5                                     |
|             | 1392        | 273.0         | 276.1                   | 212.0                       | 281.7    | 261.0             | 242.0                                | 264.9   | 251.8                                     |
|             | 1393        | 271.7         | 272.4                   | 233.5                       | 366.6    | 249.0             | 247.5                                | 243.8   | 247.0                                     |
|             | 1394        | 228.3         | 272.8                   | 260.2                       | 380.8    | 243.5             | 212.7                                | 239.5   | 271.5                                     |
|             | 1395        | 222.2         | 280.4                   | 275.1                       | 394.9    | 240.0             | 205.4                                | 250.4   | 267.9                                     |
|             | 1396        | 267.9         | 279.9                   | 304.9                       | 455.3    | 266.3             | 270.8                                | 280.9   | 284.1                                     |
| <b>1396</b> | Shahrivar   | 249.3         | 269.1                   | 302.0                       | 447.5    | 255.3             | 252.1                                | 269.7   | 304.8                                     |
|             | Mehr        | 261.1         | 293.6                   | 308.4                       | 453.5    | 262.6             | 263.4                                | 275.5   | 246.9                                     |
|             | Aban        | 275.9         | 257.9                   | 316.4                       | 462.6    | 268.6             | 278.0                                | 283.6   | 290.8                                     |
|             | Azar        | 285.4         | 264.4                   | 327.6                       | 475.4    | 276.9             | 280.9                                | 292.1   | 288.3                                     |
|             | Dey         | 300.6         | 309.0                   | 306.3                       | 493.8    | 285.5             | 300.7                                | 299.9   | 360.6                                     |
|             | Bahman      | 323.1         | 286.5                   | 324.5                       | 537.7    | 304.4             | 336.9                                | 322.4   | 279.8                                     |
|             | Esfand      | 317.5         | 291.8                   | 315.2                       | 530.6    | 297.9             | 338.9                                | 322.1   | 275.6                                     |
| <b>1397</b> | Farvardin   | 344.3         | 328.7                   | 343.9                       | 571.1    | 317.4             | 365.1                                | 349.0   | 305.6                                     |
|             | Ordibehesht | 421.8         | 393.7                   | 417.0                       | 694.0    | 385.5             | 441.7                                | 433.6   | 409.9                                     |
|             | Khordad     | 443.2         | 429.9                   | 421.9                       | 724.1    | 404.4             | 459.6                                | 455.3   | 391.8                                     |
|             | Tir         | 552.2         | 553.8                   | 508.0                       | 892.0    | 504.8             | 559.4                                | 559.8   | 508.1                                     |
|             | Mordad      | 674.4         | 708.8                   | 575.0                       | 1119.3   | 632.5             | 692.7                                | 704.4   | 636.9                                     |
|             | Shahrivar   | 849.2         | 853.3                   | 709.1                       | 1398.1   | 849.0             | 832.9                                | 878.2   | 826.6                                     |